

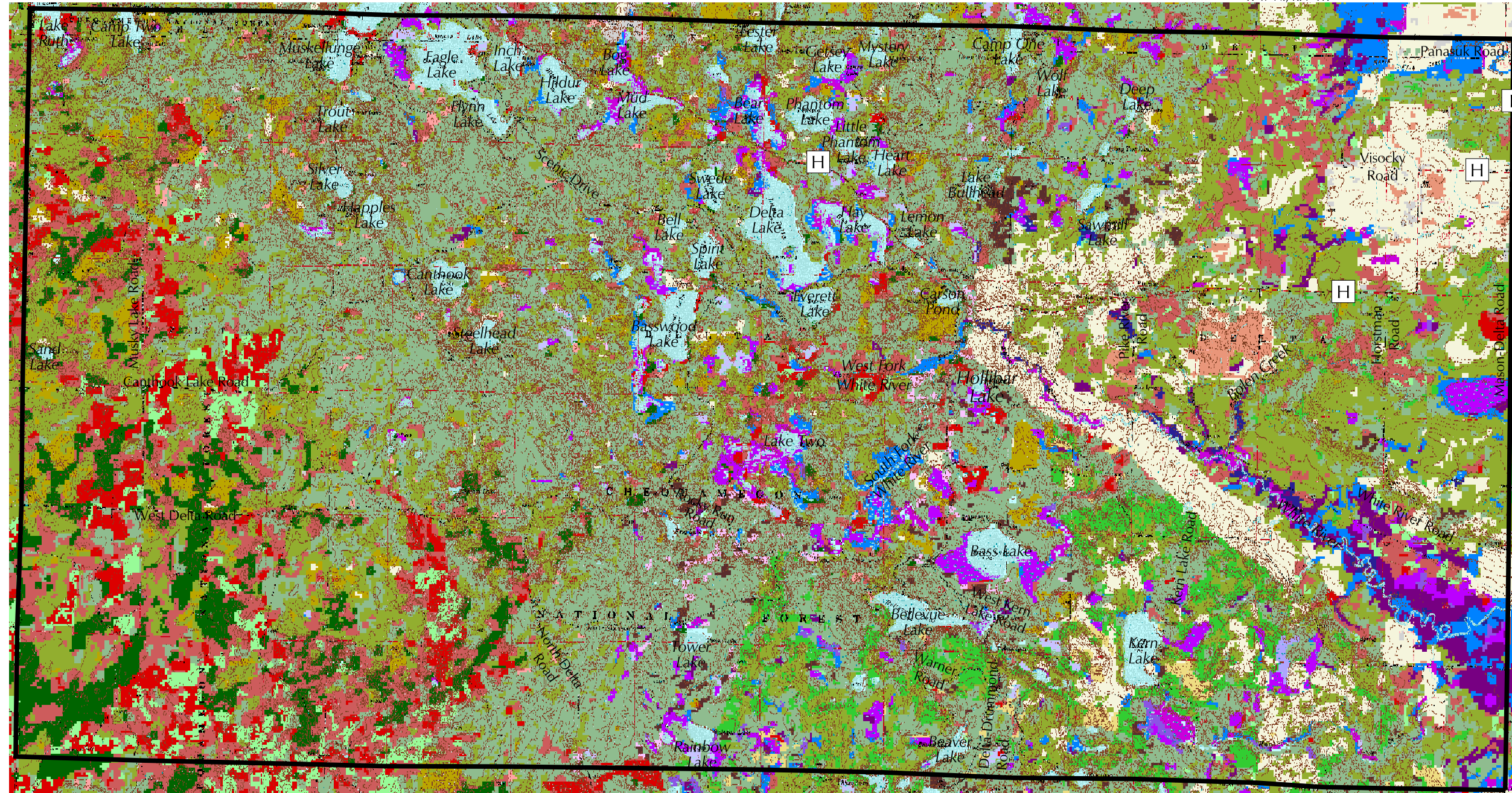
TOWN OF IRON RIVER, BAYFIELD COUNTY  
T. 47 N., R. 8 W.

TOWN OF KEYSTONE, BAYFIELD COUNTY  
T. 47 N., R. 7 W.

TOWN OF HUGHES, BAYFIELD COUNTY  
T. 46 N., R. 9 W.

TOWN OF BARNES, BAYFIELD COUNTY  
T. 46 N., R. 9 W.

TOWN OF MASON, BAYFIELD COUNTY  
T. 46 N., R. 6 W.



TOWN OF DRUMMOND, BAYFIELD COUNTY  
T. 45 N., R. 8-7 W.

- Town Boundary
- Surface Water
- LAND COVER**
- AGRICULTURE**
- General Agriculture
- Row Crops
- Forage Crops
- Grassland
- Shrubland
- Barren

- FOREST**
- Jack Pine
- Red Pine
- Mixed/Other Coniferous
- Aspen
- Oak
- Northern Pin Oak
- Red Oak
- Maple
- Mixed/Other Broad-leaved Deciduous
- Mixed Deciduous/Coniferous

- WETLAND**
- Emergent/Wet Meadow
- Lowland Shrub
- Lowland Shrub: Broad-leaved Deciduous
- Lowland Shrub: Broad-leaved Evergreen
- Lowland Shrub: Needle-leaved
- Forested: Broad-leaved Deciduous
- Forested: Coniferous
- Forested: Mixed Deciduous/Coniferous



This drawing is neither a legally recorded map nor a survey and is not intended to be used as one. This drawing is a compilation of records, information and data used for reference purposes only.

Source: U.S.G.S. 7.5-minute topographic quadrangles- Delta, Drummond NW, Grand View NW (1971), Ino (1975), Hart Lake, Iron River (1984), Bayfield County. Classification derived from LANDSAT Thematic Mapper (TM) satellite imagery from 1991, 1992, and 1993. The classification has been "smoothed" to a 1-acre minimum mapping unit (4 contiguous pixels) from the original 30-meter pixel size. Wetlands smaller than one acre and open water pixels were not smoothed. Classification was done at the Wisconsin DNR, GEO Services Section.

Source: Wisconsin DNR, 1991-93; U.S.G.S. 1971-1984.



# MAP 5-1 LAND COVER AND U.S.G.S. QUADRANGLE Town of Delta Bayfield County, Wisconsin

